

**FLURO®-Gelenklager GmbH**

# FLURO® Product range



## FLURO® Rod ends



### Series K

GI(A)..  
GI(A)S..  
GI(A)XS..  
GI(A)RS.. / GI(A)RS..R  
GI(A)SW..\*  
GI(A)XSW..\*  
GI(A)RSW.. / GI(A)RSW..R\*  
GI(A)O..  
GI(A)OW..\*

### Series E

EI(A).. (-2RS)  
EI(A)..D (-2RS)\*

All female rod ends series are available with **CETOP** dimensions for pneumatic cylinders

\*maintenance-free

## FLURO® Spherical plain bearings



### GL..

GLXS..  
GLRS.. / GLRS..R  
GLXSW..\*  
GLRSW.. / GLRSW..R\*  
GXS.. / GXS..R  
GXSW.. / GXSW..R\*

## FLURO® Corrosion-resistant rod ends | Spherical plain bearings | NIRO



### Rod ends

#### Series K

GI(A)RSW..RR / RR.316 / NIRO\*

#### Series E

EI(A)..D-NIRO (-2RSF)\*

### Spherical plain bearings

#### Series K

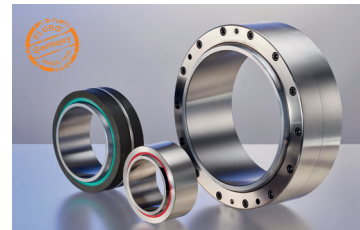
GXSW..RR / RR.316\*  
GLRSW..RR / RR.316\*

#### Series E

GE..EC-NIRO (-2RSF)\*  
GE..FW-NIRO (-2RS)\*



## FLURO® High-performance rod ends | Spherical plain bearings | FLUROGLIDE®



PTFE high-performance liner **FLUROGLIDE®** – completely maintenance-free – for maximum static and dynamic loads – improved lasting lifetime – available as **WEAR SOLID** and **MEDIA SOLID**

### Rod ends

EI(A)..EW-2RS\*

### Spherical plain bearings

GE..EW (-2RS)\*  
GE..GW (-2RS)\*  
GE..CW (-2RS)\*  
GE..SWE\*  
GE..AWE\*

GE..EWM (-2RSF)\*  
GE..EWM-NIRO (-2RSF)\*  
GE..GWM-NIRO (-2RSF)\*



## FLURO® Rod ends | Spherical plain bearings for motor sport



### Rod ends

#### Series K

GI(A)XSW..MS\*

### Spherical plain bearings

#### Series K

GXSW..MS\*  
GXOW..MS\*  
GXO..ICR (RR)

#### Series E

GE..FW-NIRO-MS\*  
GE..EC-NIRO-MS\*

## FLURO® Rod ends with ball- | roller-bearing (DIN ISO 12240-4)



Rod ends with integral self-aligning ball- and roller-bearing for use at high revs

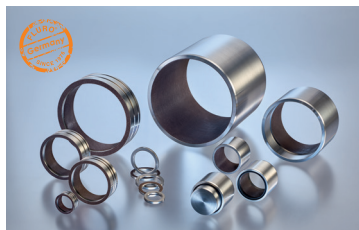
GI(A)B..  
GI(A)T..

## FLURO® Couplings | Connecting rods | Link rods



Application in the field of automotive engineering, wheel suspensions and vehicle bodies – to customer design

## FLURO® Cylindrical sliding bushings (DIN ISO 4379) | FLUROGLIDE®



Lined with **FLUROGLIDE®**

GB..x..x..ZW\*

## FLURO® Precision parts for aviation and aerospace



For highest demands on tensile strength and pressure resistance against extreme external influences and on corrosion resistance

## FLURO® Special and individual applications to customer design



Rod ends | Spherical plain bearings



Rod ends

GKI(A)..  
GKI(A)W..\*

Spherical plain bearings

GE..ET / XT (-2RS)\*  
GE..ES (-2RS)  
GEEM..ES (-2RS)  
GEEW..ES  
GEG..ES (-2RS)  
GEG..ET / XT (-2RS)\*

GAC..S  
GAC..T\*  
GX..S  
GX..T\*

GEZ..ES (-2RS) inch sized

\*maintenance-free

Hydraulic rod ends



FPR..S / GIHO-K..DO  
FPR..CE / GIHN-K..LO  
FPR..N / GIHR..DO  
FPR..U / GIHR-K..DO

FMA..D  
FS..C / GK..DO  
FS..N / GF..DO

Angle joints (DIN 71802)



Consisting of ball stud to DIN 71803 and ball journal to DIN 71805

Form C – with threaded stud and hexagon nut  
Form CS – with threaded stud, hexagon nut and external clip

Fork heads (DIN 71752) |

Fork ball joints (DIN 71751)

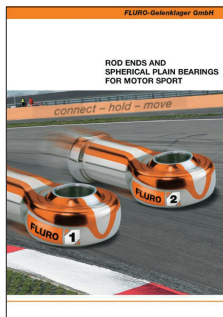
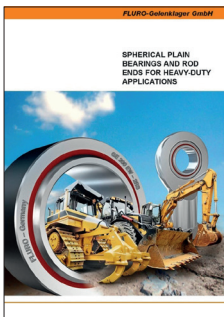


With ES-bolt or cotter bolt – for use to transmit linear movements

Accessories



Locking nuts – Seals – Bolts – KRC Sleeves



HÖHN Precision parts



Precision parts and assemblies manufactured to customer requirements by our sister company **Martin Höhn GmbH**



## FLURO®-Gelenklager GmbH

Siemensstr. 13  
72348 Rosenfeld, Germany

Tel. +49 74 28 | 93 85 - 0  
Fax +49 74 28 | 93 85 - 25

info@fluro.de  
**www.fluro.de**

